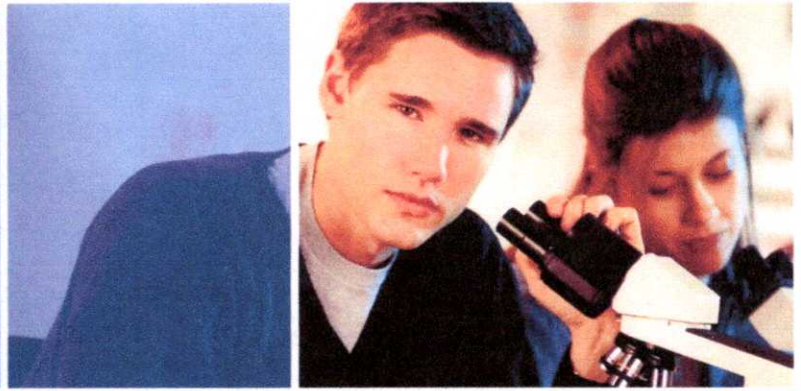


## Tuition Payment Plans



### Money-saving, interest-free monthly payments

Tuition payment plans are a money-saving option that makes education affordable and attainable by breaking down tuition costs into interest-free monthly payments, rather than paying in one lump sum. Plan terms can be customized to best fit the needs of your school and families. Electronic billing and payment options put an end to paper statements and delinquent accounts, making it easier for you to manage billing and cash flow.

#### Benefits for parents

In addition to lessening the impact of expensive lump-sum payments, parents borrow less and minimize financial stress. Plans can easily be combined with loans if additional funding is necessary. At the school's discretion, payment plans can also provide peace of mind through Tuition Protection Coverage – life insurance that pays the remainder of the Plan year's tuition in the event of the death of the bill payer. Sallie Mae is also able to counsel families on available payment options.

To accommodate today's busy schedules, parents have the flexibility to:

- Enroll online, or by phone, fax or mail
- Receive statements online or by mail
- Make payments by personal check, credit card, automatic withdrawal or electronic check
- Manage their account 24/7 online or over the phone through our IVR

#### Benefits for your school

Plans can be tailored to the needs of your families, as well as your cash flow needs. Your school benefits substantially because tuition costs become more affordable when families don't have to pay all at once. Families are also more likely to pay on time, improving your school's cash flow. If your school currently offers an internal payment plan, opting to outsource will allow your business office to focus on other tasks while our customer service handles enrollment, questions, billing and payments.

Accurate, real-time reporting lets you manage accounts more effectively. On-demand fax reports and 24/7 student account access are available when you need them, and data downloads and account management are offered online for your convenience.

To learn more about Sallie Mae Business Office Suite's Tuition Payment Plans, please contact your Sallie Mae Account Executive, call 1-800-322-3674, or visit [www.salliemae.com/suite](http://www.salliemae.com/suite).

## K-12 Family Education Loan



### Making a private school education attainable and affordable

Sallie Mae's K-12 Family Education Loan helps parents cover all education expenses of private school, including tuition, room and board, books, computers, musical instruments, music lessons, sports and theater, and other extracurricular activities that enrich a child's learning experience. Funds can be disbursed to the school or directly to the family.

#### Benefits for parents

There are many advantages to a private school education. The K-12 Family Education Loan gives parents the opportunity to provide their child with a top-notch education.

Benefits of this loan include:

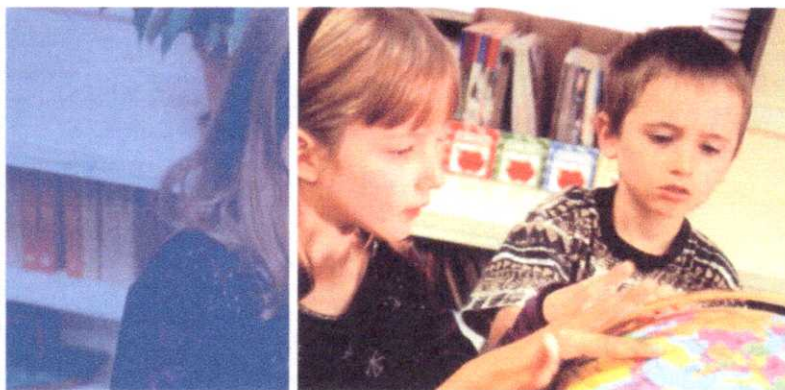
- High approval rate (70%)
- Variable interest rate, based on borrower's credit. Interest rates start at Prime + 1% with fees as low as 2%
- Borrow from \$1,000 up to the total cost of the child's education
- Up to 15 years to repay, with a minimum \$30 monthly payment
- No prepayment penalties
- Repayment begins 30 days after disbursement
- Can be used separately or in conjunction with a Business Office Suite payment plan

#### Eligibility requirements

Borrowers must be creditworthy U.S. citizens or permanent residents. Borrowers with no credit or poor credit may still qualify for a loan by applying with a creditworthy co-borrower, which can lower interest rates and fees. After 24 consecutive, on-time payments of principal and interest, the co-borrower may be removed from the account if a financial review indicates creditworthiness on the part of the primary borrower.

To learn more about Sallie Mae Business Office Suite's K-12 Family Education Loan, and how your business office and your families can benefit, please contact your Sallie Mae Account Executive, call 1-800-322-3674, or visit [www.salliemae.com/suite](http://www.salliemae.com/suite).

## Electronic Payment Gateway



### Fast, easy, secure payments online

The Electronic Payment Gateway (EPG) is the best solution for K–12 schools searching for a fast, easy and secure way to enable parents, donors and alumni to make payments using a credit card, debit card, or ACH debit over the Internet.

#### Receive payments quicker

By collecting payments electronically, your school receives funds the next day. With the Electronic Payment Gateway, parents or other designated payers can make payments from any location with online access, 24 hours a day, seven days a week. The service gives you:

- **Customization.** We will customize the service to conform to the look and feel of your web site.
- **Flexible payment options.** Your school can choose whatever payment options you would like to offer (i.e., ACH debit, credit cards, debit cards).
- **Customized reporting.** Tracking methods allow you to design customized transaction or settlement reports.
- **Real-time verification.** The EPG provides real-time validation on credit card transactions. For an ACH transaction, we can validate the routing transit number and can restrict certain payers based on poor payment history.
- **Real-time transaction reporting.** The EPG tracks and reports transactions real-time, allowing verification of payer-initiated transactions immediately.

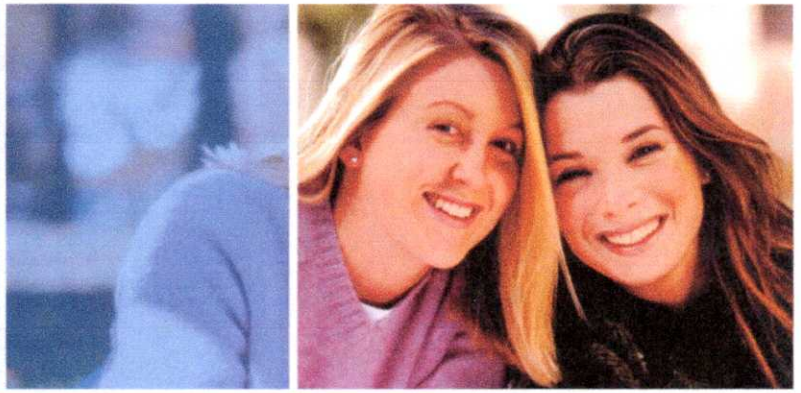
- **Archiving.** Payment history is available online for 12 months. The system archives transaction data for 7 years.
- **Dynamic Data Transfer.** The EPG allows for real-time transfer of demographic data and dollar amount, eliminating the need to re-key data on the school's site and payment pages.

#### Fast, easy implementation

As an application service provider, Sallie Mae hosts the Electronic Payment Gateway on a secure Sallie Mae server. There is no hardware for you to install and maintain, and no software to buy and update. The EPG is easy to integrate with your current system, requiring no complicated code or configuration. A link from your school's web site to our secure server lets us gather all the transaction information needed to facilitate the totally secure transactions.

To learn more about Sallie Mae Business Office Suite's Electronic Payment Gateway, please contact your Sallie Mae Account Executive, call 1-800-322-3674, or visit [www.salliemae.com/suite](http://www.salliemae.com/suite).

## Electronic Bill Presentment and Payment Statement Processing Services



### Secure, web-based statement viewing and payment

Electronic Bill Presentment and Payment (EBPP) provides a secure, web-based technology that lets parents receive and pay school bills over the Internet. It offers reduced costs, improved service, and faster funds delivery compared with traditional paper billing and payment methods, which will still be available to those who prefer those options.

#### Customized Billing

With EBPP, you can present eBills to parents and third parties quickly and easily. We work with you to design the eBill, customizing it to your specifications, including the navigation that links to other information on your web site. Charges that are currently being billed separately, such as school loans, can be consolidated into one bill.

Parents can enroll to receive their bill and pay online right on your school's web site. The system sends an email message when an eBill is ready for viewing, and when a payment transaction is completed.

After parents have reviewed their bills, they simply click on the "pay" button to schedule a payment. You can choose from multiple payment options, including ACH debit, credit card, and debit card. Credit card validity is instantly verified and pre-notes can be generated for ACH transactions. The system also generates a remittance file that your school can use to electronically update the school's administrative software.

Parents can schedule their payments up to 12 months in advance through EBPP. The system stores the payment data and initiates the payment on the scheduled date. Parents

can make payments from wherever they have online access, and can also check the status of their payments, or view their billing history for up to 12 months, online 24 hours a day.

#### Statement Processing

Despite the speed and convenience of EBPP, some parents will want traditional paper statements. So you can serve them more efficiently, we offer a state-of-the-art statement processing service that allows you to save up to 40% on your total cost. Sallie Mae's centralized mail operation can:

- Receive your school's billing file
- Print customized statements
- Insert up to four brochures
- Stamp the envelope
- Mail the statements within 48 hours

To learn more about Sallie Mae Business Office Suite's Electronic Bill Presentment and Payment, please contact your Sallie Mae Account Executive, call 1-800-322-3674, or visit [www.salliemae.com/suite](http://www.salliemae.com/suite).